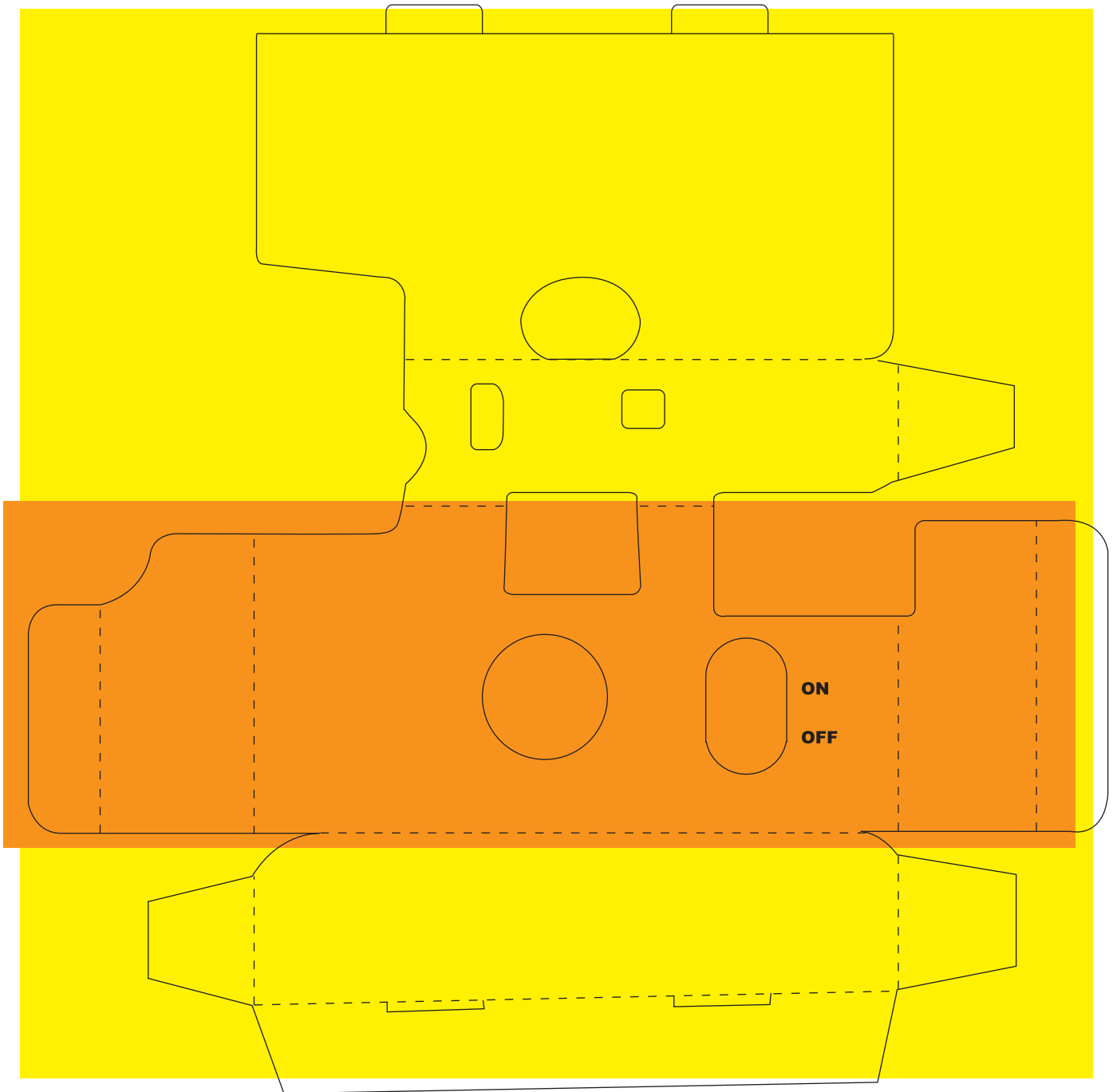


Die cutting guide

Model: NNS



Please use this die cutting guide when producing the finished artwork for your camera design.

To help us obtain the optimum result when printing, please note the following:

1. Completely fill in the area (shown here in orange and yellow) to allow for bleed.
2. All logos and text should be a minimum of 2mm away from all die cutting and folding lines.
3. When over-print is NOT required, all logos and text should include trapping -i.e. should have extra thickness around the edges, to be larger than the reversed white area behind them.